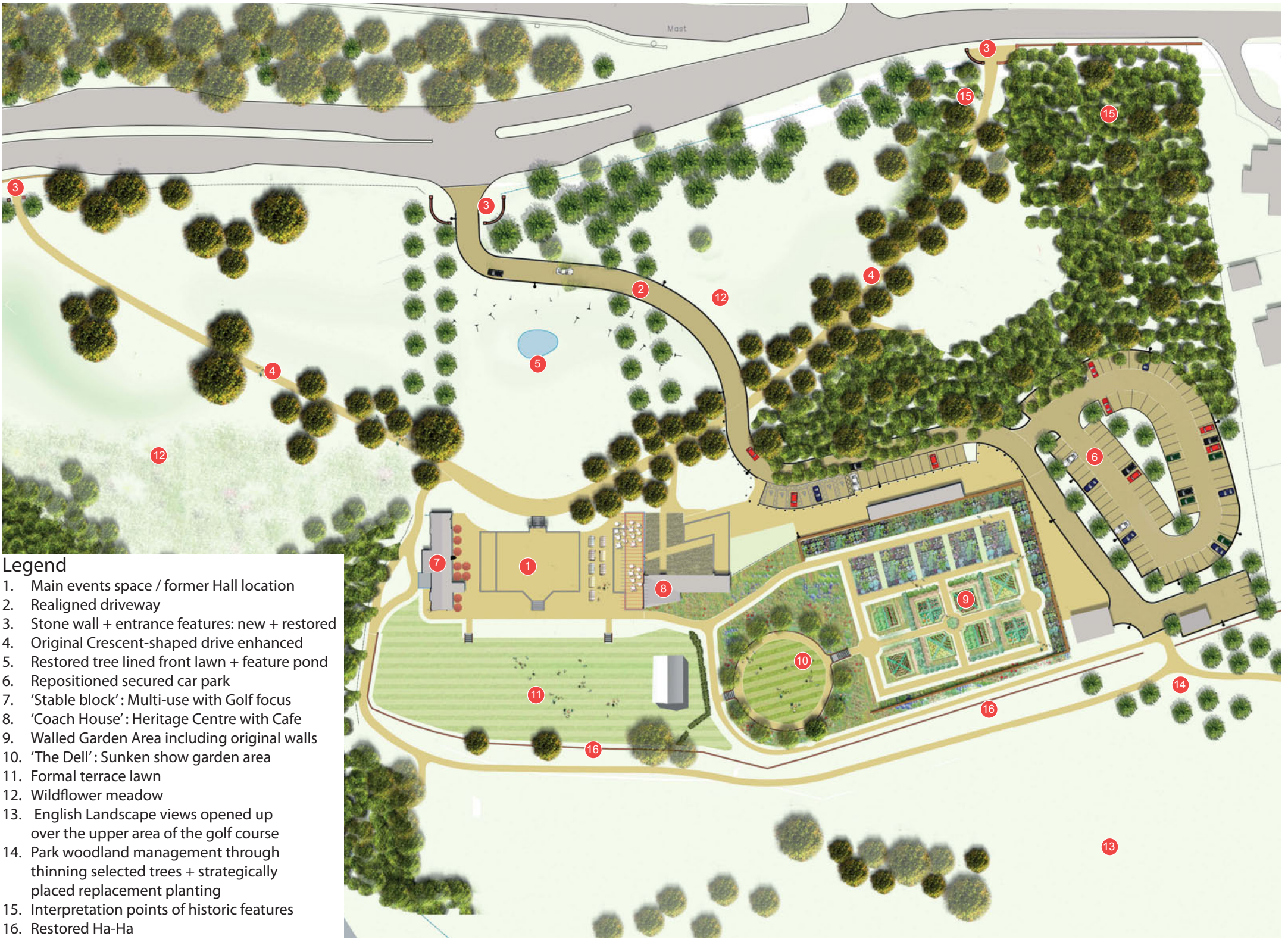


BOARD B: BOWRING PARK

MASTERPLAN : WHAT IS PLANNED FOR HLF SUBMISSION

What do you think? Comment at:
www.cfpuk.co.uk/bowringpark/



Legend

1. Main events space / former Hall location
2. Realigned driveway
3. Stone wall + entrance features: new + restored
4. Original Crescent-shaped drive enhanced
5. Restored tree lined front lawn + feature pond
6. Repositioned secured car park
7. 'Stable block': Multi-use with Golf focus
8. 'Coach House': Heritage Centre with Cafe
9. Walled Garden Area including original walls
10. 'The Dell': Sunken show garden area
11. Formal terrace lawn
12. Wildflower meadow
13. English Landscape views opened up over the upper area of the golf course
14. Park woodland management through thinning selected trees + strategically placed replacement planting
15. Interpretation points of historic features
16. Restored Ha-Ha

RESTORING HERITAGE



Entrance feature; eastern side, c. 1760 feature : Repair + reinstall the missing pillars + wall



Ha-ha : c. 1760 feature : Repair wall + coping, remove hedge on top + reinstate the ditch



Dell : c. mid 19th Century feature : Repair steps, walls + feature shrub + tree planting



Walled Garden : Estimated c. early 19th Century feature. Restore to a functioning garden

INTERPRETING HERITAGE



Location of Roby Hall: Create central space where hall was + mark out building foundations



Interpretation boards : To provide heritage references



Former c. 1760 Ancillary building, interpreted with an arched pergola

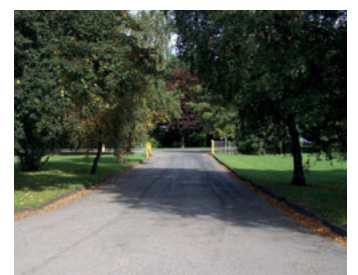


Western entrance pillars : To create a sense of arrival

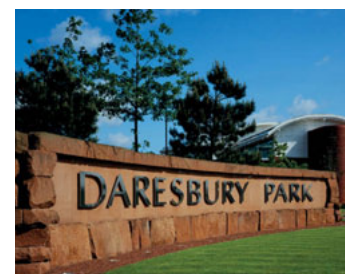
ENABLING HERITAGE



'Coach House' fully restored. To be a multi-functional building; see Board D for more details



Driveway & car park: Using the direct approach would destroy the 1760's design principles



Entrance feature: Low sandstone wall with lettering to create a sense of arrival and welcome



'Stable block': Restored inside + out : A multi-functional building see Board C for more details



Terrace views from Hall location : Open up the terrace to can appreciate the former aspect



Formal garden layout, views + sundial : restored



Traditional seating proposed



Welcome signage proposed