

# BOARD C: BOWRING PARK

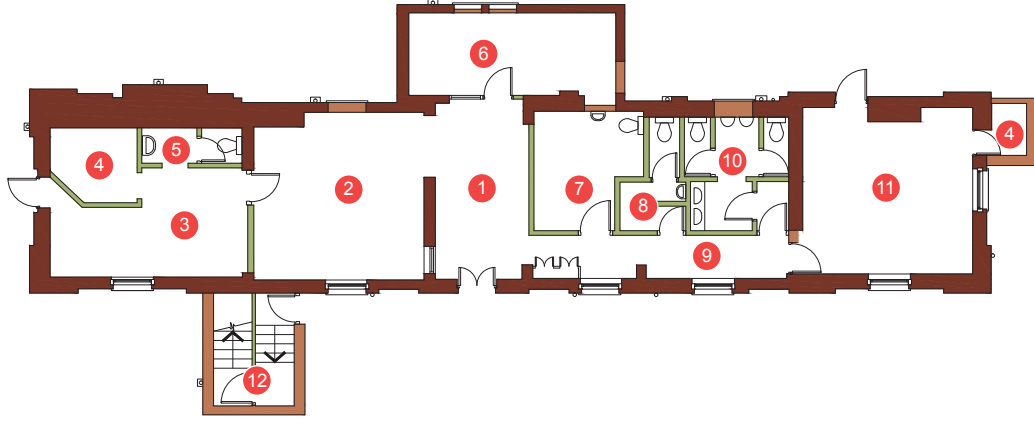
## ARCHITECTURAL DRAWINGS : 'STABLE BLOCK' - EXISTING GOLF FOCUS

What do you think? Comment at:  
[www.cfpuk.co.uk/bowringpark/](http://www.cfpuk.co.uk/bowringpark/)

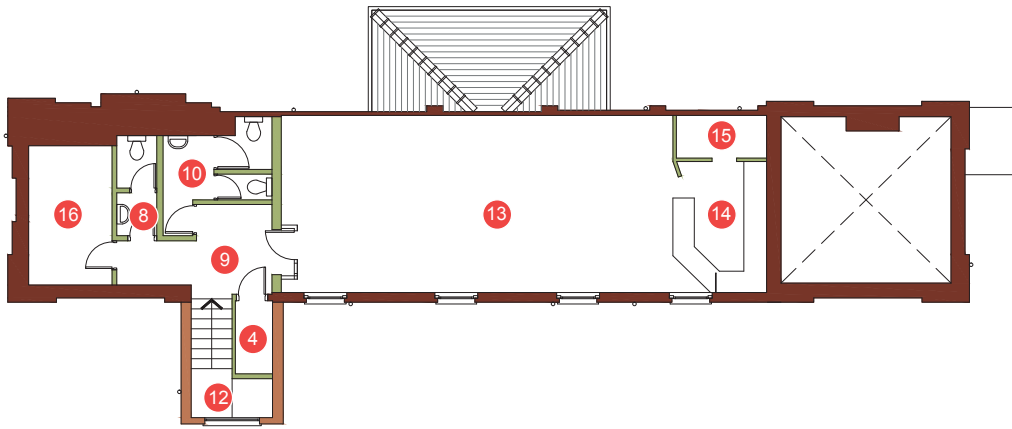


### Current

#### Ground floor



#### First floor



### Current Elevation

#### East Facing



### Legend

#### Current Plan

1. Entrance lobby
2. Reception / golf shop
3. Kitchen / Office
4. Storage space
5. Unisex toilet
6. Club / meeting room
7. Accessible toilet
8. Female toilet
9. Corridor
10. Male toilet
11. Staff room
12. Stairs
13. Golf Club Room
14. Bar
15. Bar cellar
16. Kitchen

### Legend

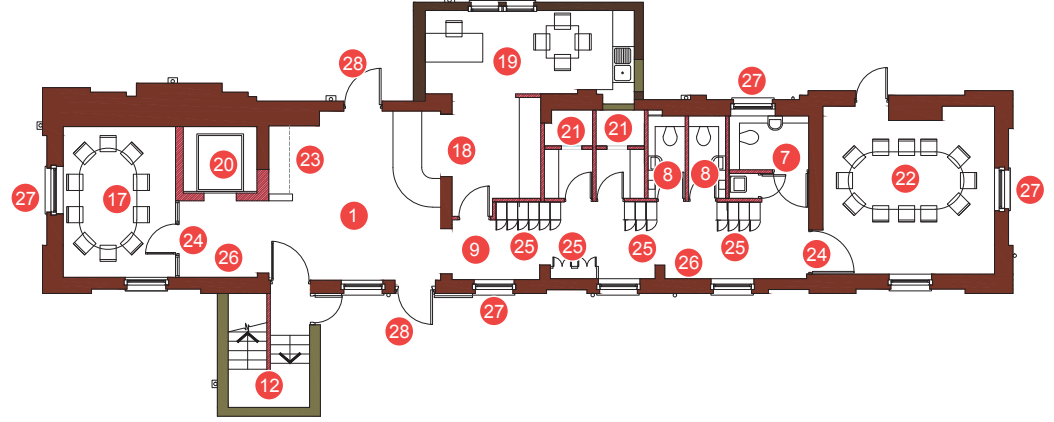
#### Envisioned Plan

17. Entrance Lobby
18. Reception - with shutter
19. Golf Office / Staff Room
20. Lift
21. Showers / wet room
22. Meeting room - double height space
23. Shop Displays with shutters
24. Glass door and screen
25. Lockers
26. Interpretation displays on walls
27. New external door reinstated
28. New external door reinstated
29. Flexible meeting / Function / Golf Club Room
30. New Kitchen / setting out space
31. Glazed Lobby
32. Bar, with roller shutters to screen off
33. All brickwork to be exposed
34. New glazed opening to view full height space

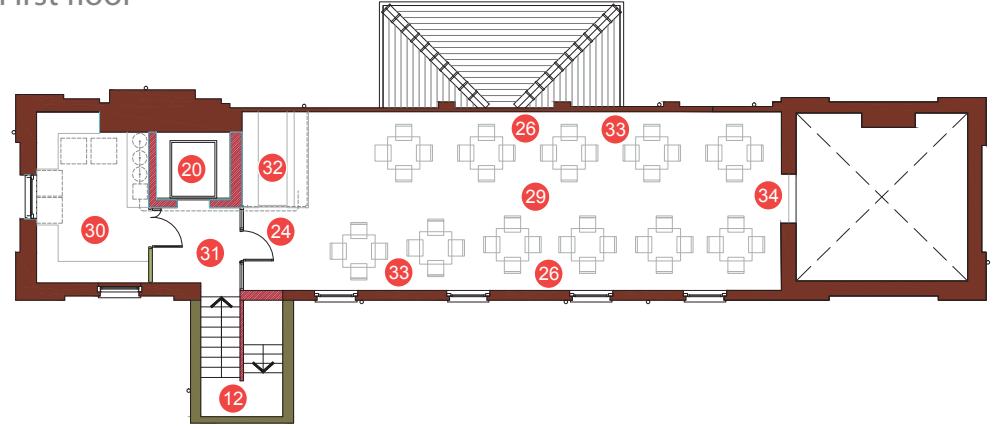


### Envisioned

#### Ground floor



#### First floor



### Envisioned Elevation

#### East Facing



### Current Elevation

#### North Facing



### Envisioned Elevation

#### North Facing

