

# BOARD D: BOWRING PARK

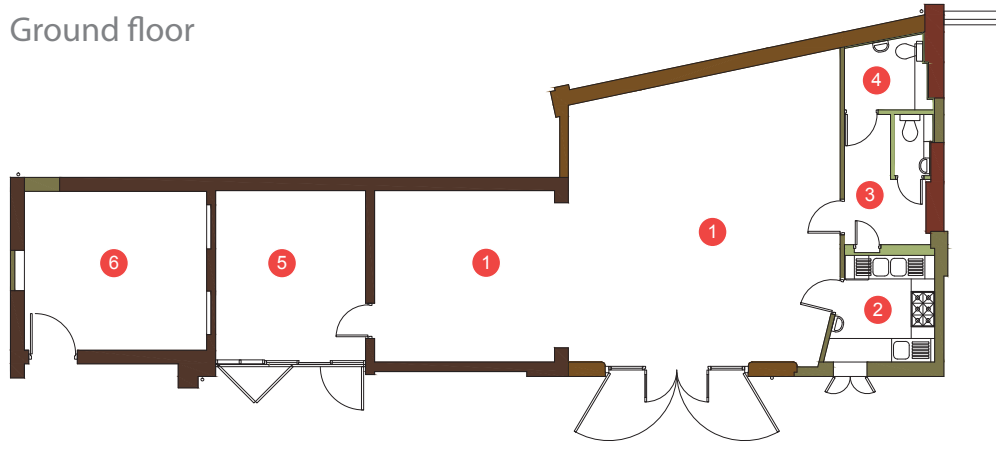
## ARCHITECTURAL DRAWINGS : 'COACH HOUSE' - EXISTING VISITOR CENTRE

What do you think? Comment at:  
[www.cfpuk.co.uk/bowringpark/](http://www.cfpuk.co.uk/bowringpark/)

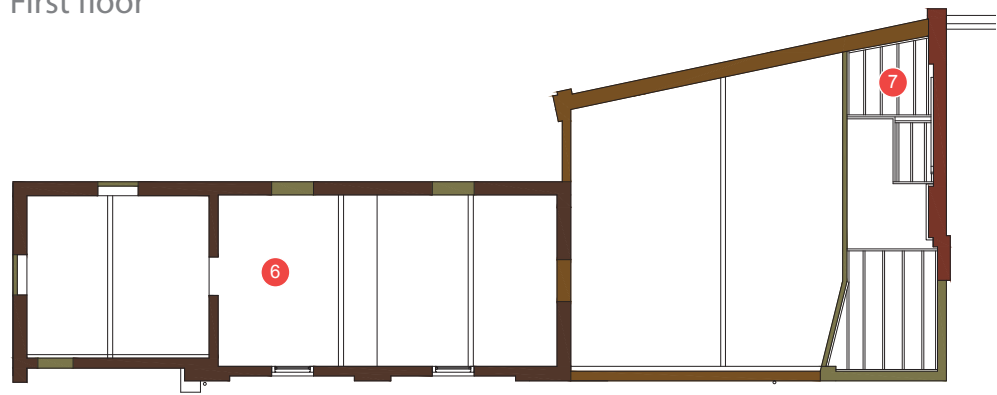


### Current Plans

Ground floor

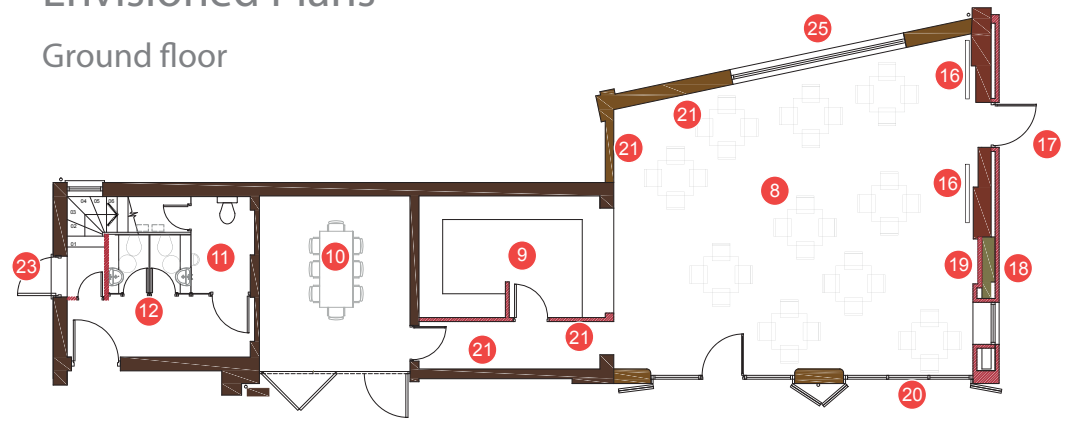


First floor

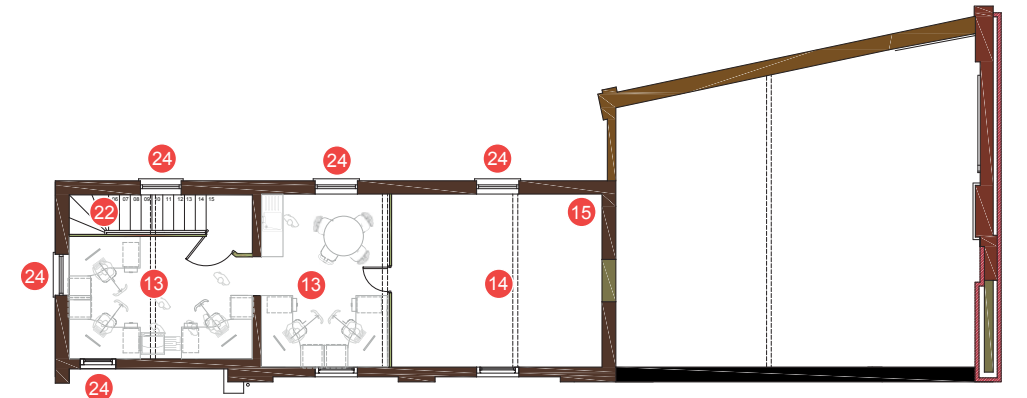


### Envisioned Plans

Ground floor

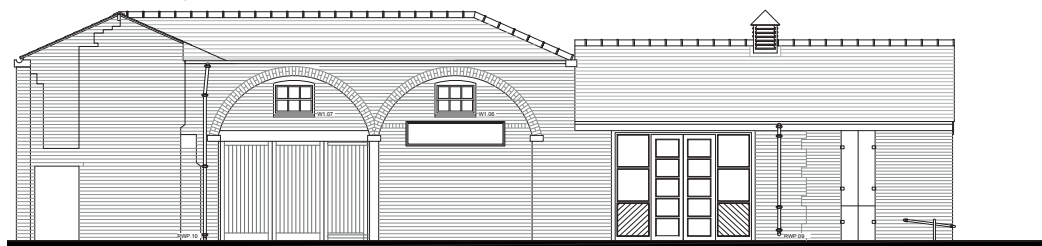


First floor



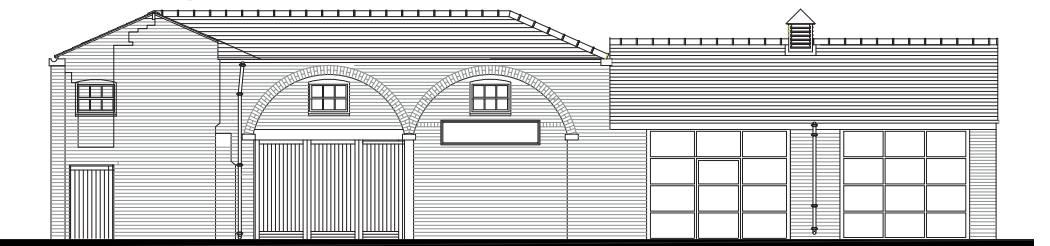
### Current Elevations

North Facing



### Envisioned Elevations

North Facing



### Legend

#### Current Plan

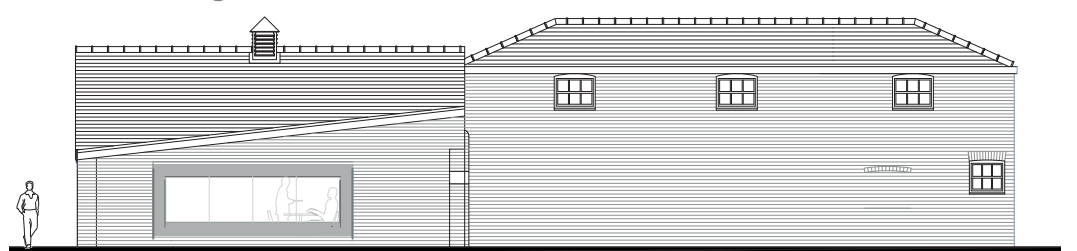
1. Multi-use, double-height space used as a cafe
2. Kitchen
3. Lobby + unisex toilet
4. Accessible toilet
5. Office space
6. Storage space
7. Boiler

### Legend

#### Envisioned Plan

8. Multi-use, double-height space, used as a cafe
9. Kitchen
10. Meeting room
11. Accessible toilet, accessed externally
12. Unisex toilets, accessed externally
13. Reinstate first floor creating office space
14. Reinstate first floor creating storage space
15. New Boiler, with new underfloor heating
16. Free-standing frame to lock golf bags to
17. Fully open up old doorway
18. New imperial sized external brick skin
19. Open up remains of East wing of Roby Hall
20. Remove modern wall + add glazed opening
21. Interpretation displays
22. New stairs reinstated
23. New external door reinstated
24. New windows reinstated
25. New window added: allows landscape views

South Facing



West Facing



East Facing

